



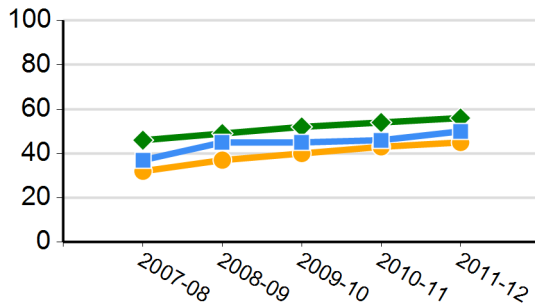
2011-12 School Quality Snapshot

Raymond A. Villa Fundamental Intermediate

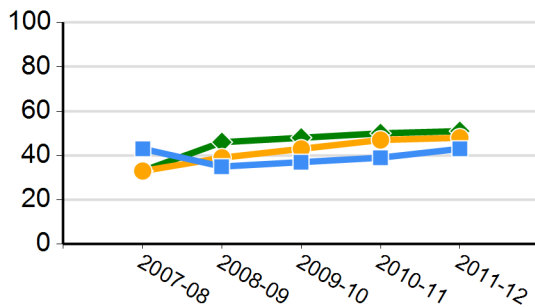
Santa Ana Unified
1441 East Chestnut Ave., Santa Ana, CA 92701

Grades Offered: 6 - 8
Enrollment: 1,399
Charter: No
Title I Funded: Yes
CDS Code: 30-66670-6115588

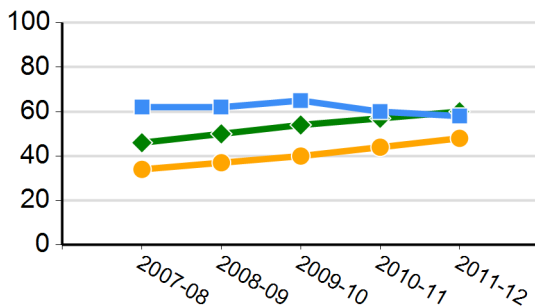
CST English-language Arts Results (percent proficient and above)



CST Mathematics Results (percent proficient and above)



CST Science Results (percent proficient and above)



California's Academic Performance Index (API)

2012 Growth API	775
State Rank	4
Similar Schools Rank	7
2011-12 Growth from Prior Year	16
Met Schoolwide Growth Target	Yes
All Student Groups Met Target	Yes

API Subgroup Performance - 2012 API Growth

	Met Target	Growth
African American or Black		--
American Indian or Alaska Native		--
Asian		--
Filipino		--
Hispanic or Latino	Yes	15
Native Hawaiian or Pacific Islander		--
White		--
Two or More Races		--
English Learners	Yes	15
Socioeconomically Disadvantaged	Yes	14
Students with Disabilities	Yes	8

Green = Student group met target
Red = Student group did not meet target
Blue = Student group is not numerically significant
-- = Not enough students to report

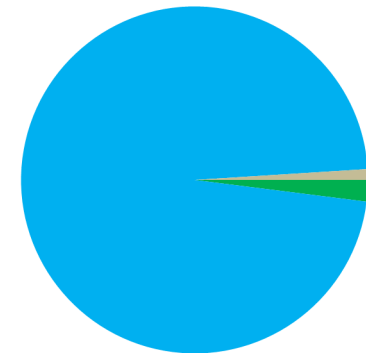
CHART LEGEND:

■ SCHOOL ● DISTRICT ◆ STATE

CST: CA Standards Test CDS: County-district-school

School and/or district information will not be displayed when data are not available or when data are representing fewer than 11 students.

2011-12 Enrollment by Race/Ethnicity

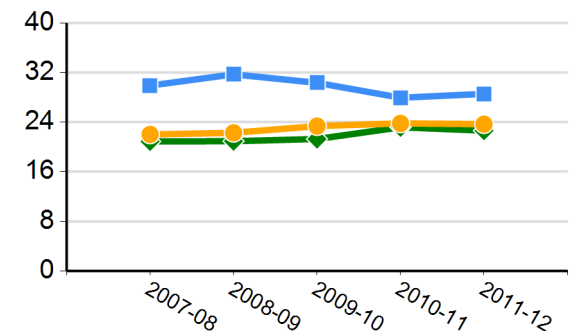


■ American Indian or Alaska Native	■ Hispanic or Latino
■ Asian	■ African American or Black
■ Native Hawaiian or Pacific Islander	■ White
■ Filipino	■ Two or More Races
	■ Not Reported

2011-12 Subgroup Enrollment

English Learners	44%
Socioeconomically Disadvantaged	90%
Students with Disabilities	7%

Average Class Size





2011-12 School Quality Snapshot

Raymond A. Villa Fundamental Intermediate

Santa Ana Unified
1441 East Chestnut Ave., Santa Ana, CA 92701

Grades Offered: 6 - 8
Enrollment: 1,399
Charter: No
Title I Funded: Yes
CDS Code: 30-66670-6115588

